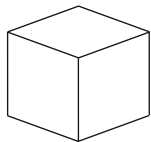
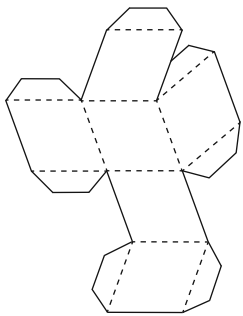


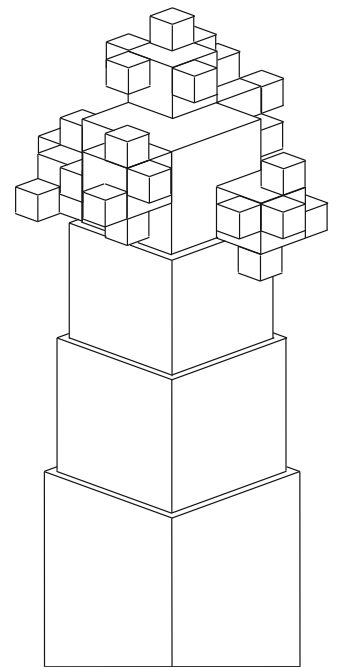
Cut out the shapes, fold and glue them to form individual "cubes" in different sizes.

The best result is obtained when printing on paper of about 150g/m².

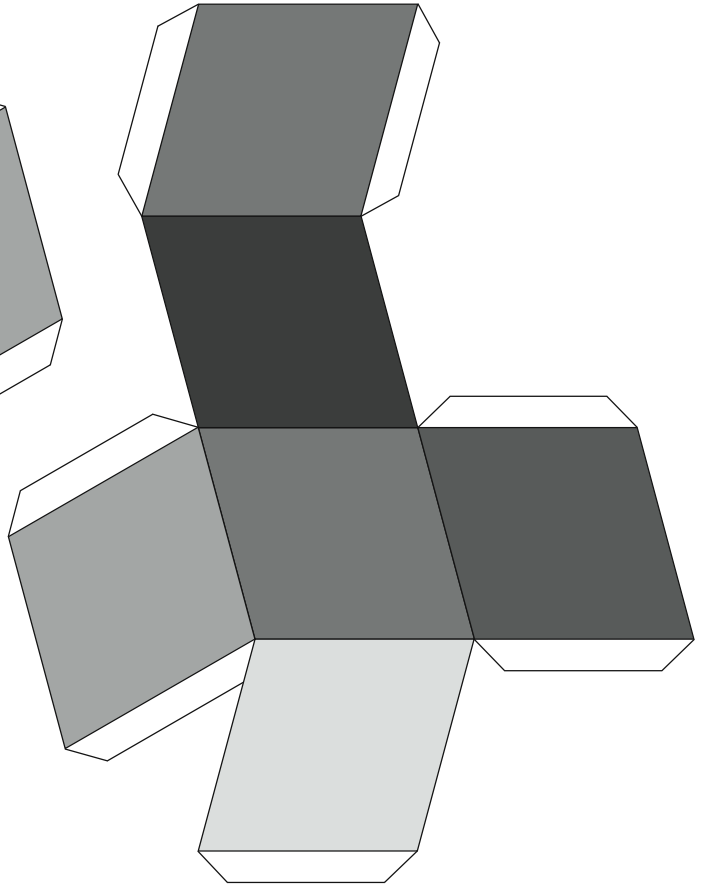
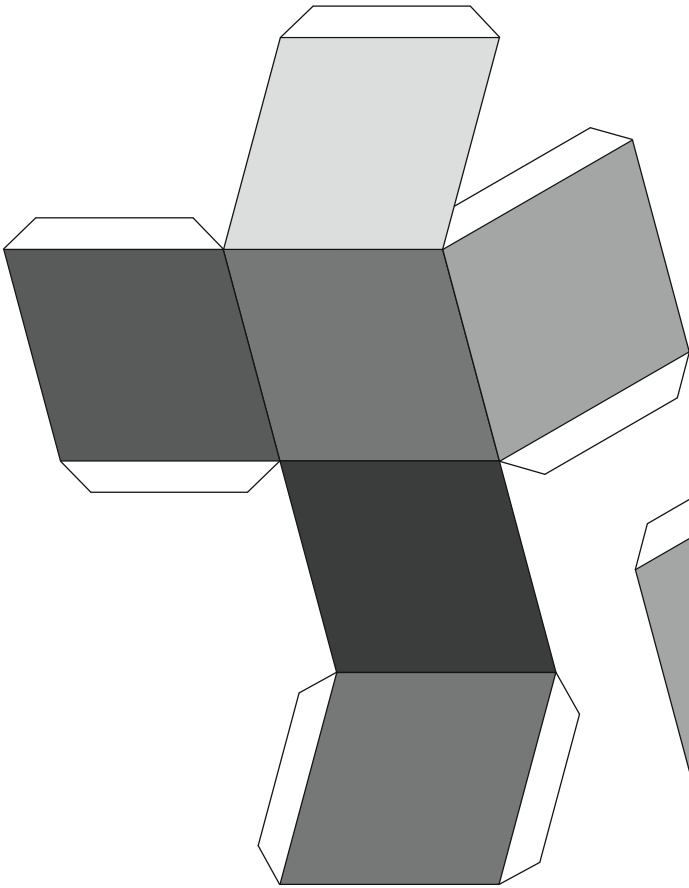
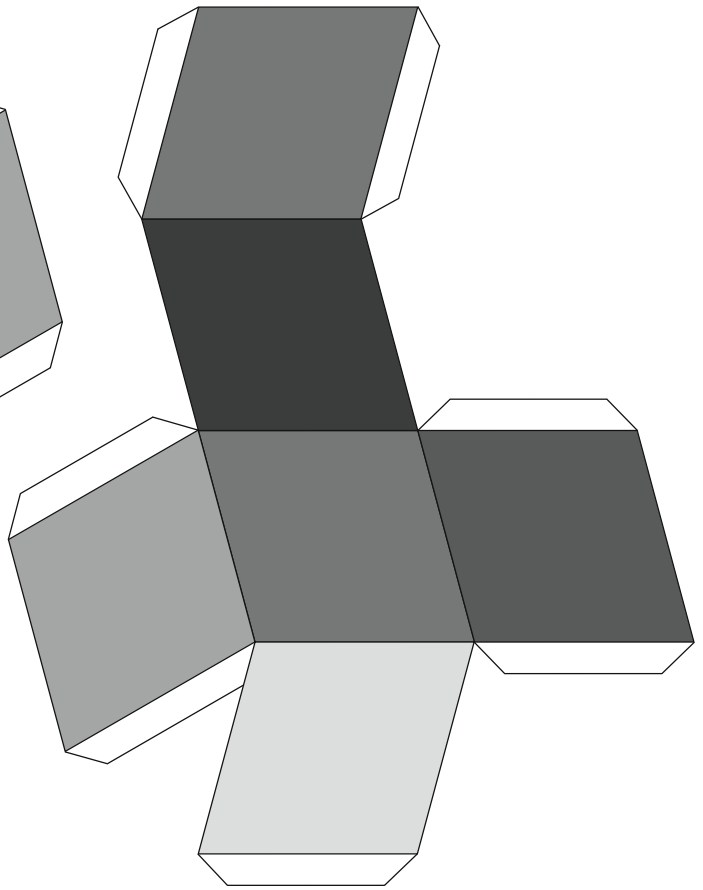
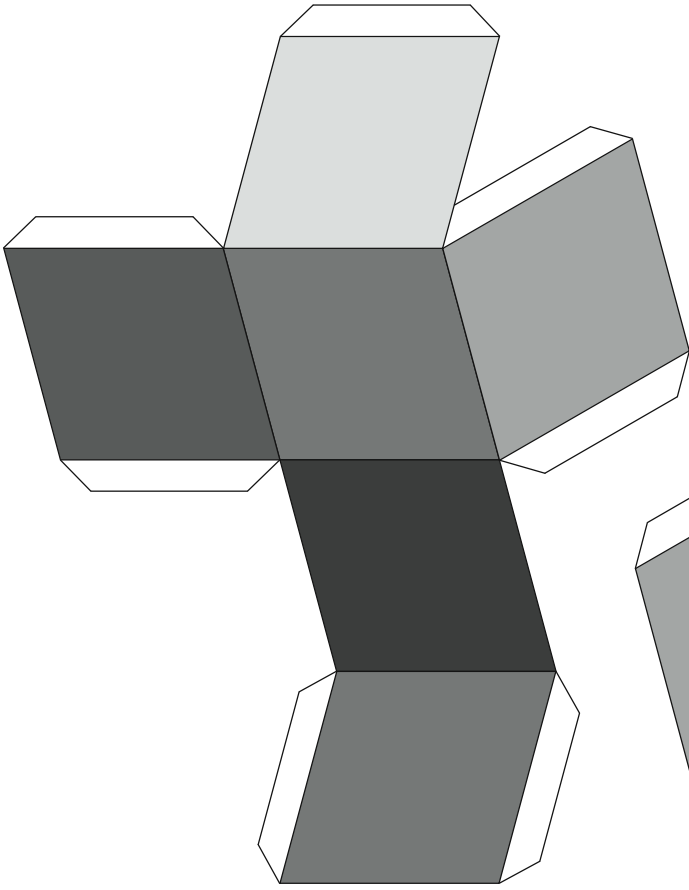


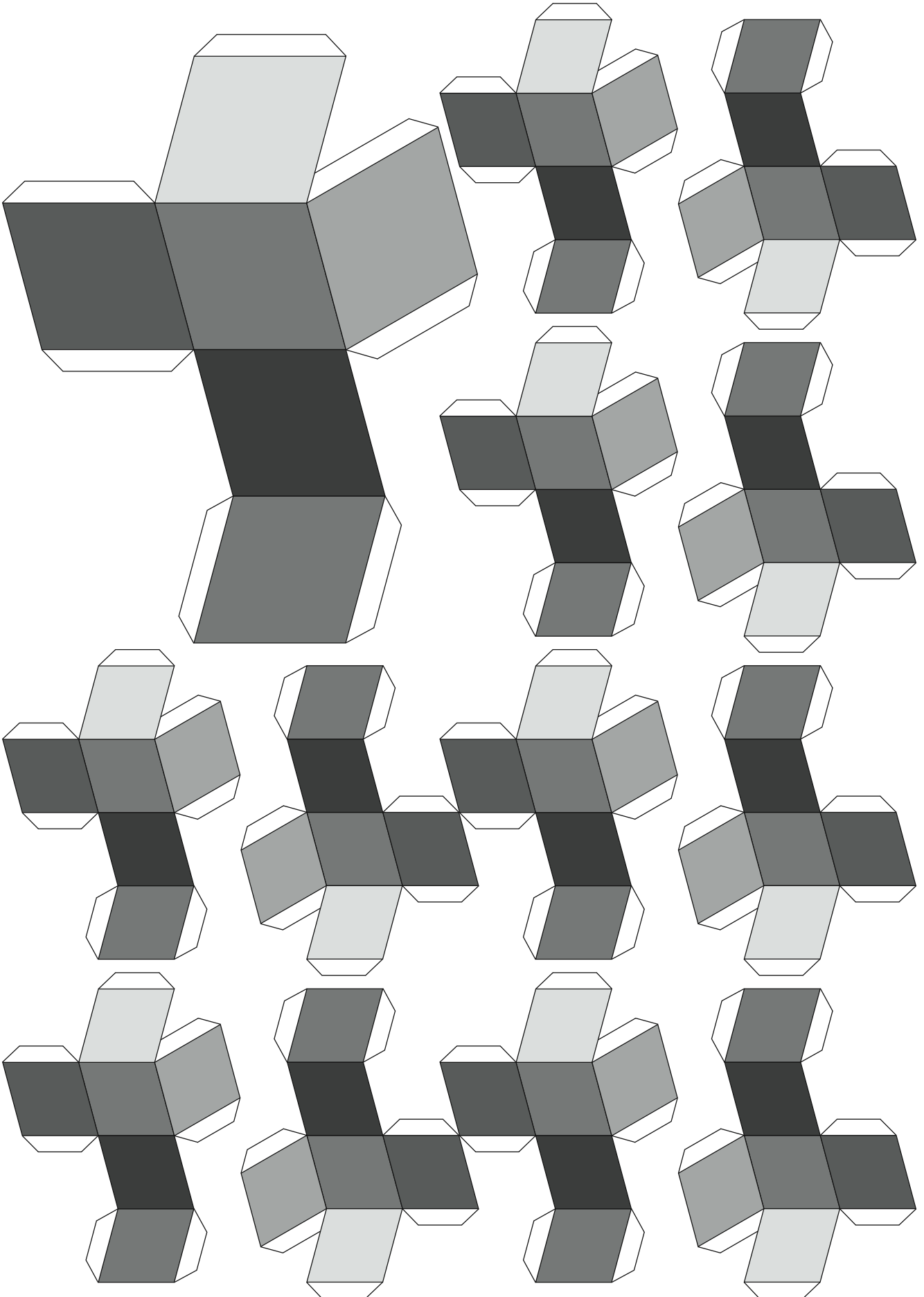
— Cut the shapes along these lines.

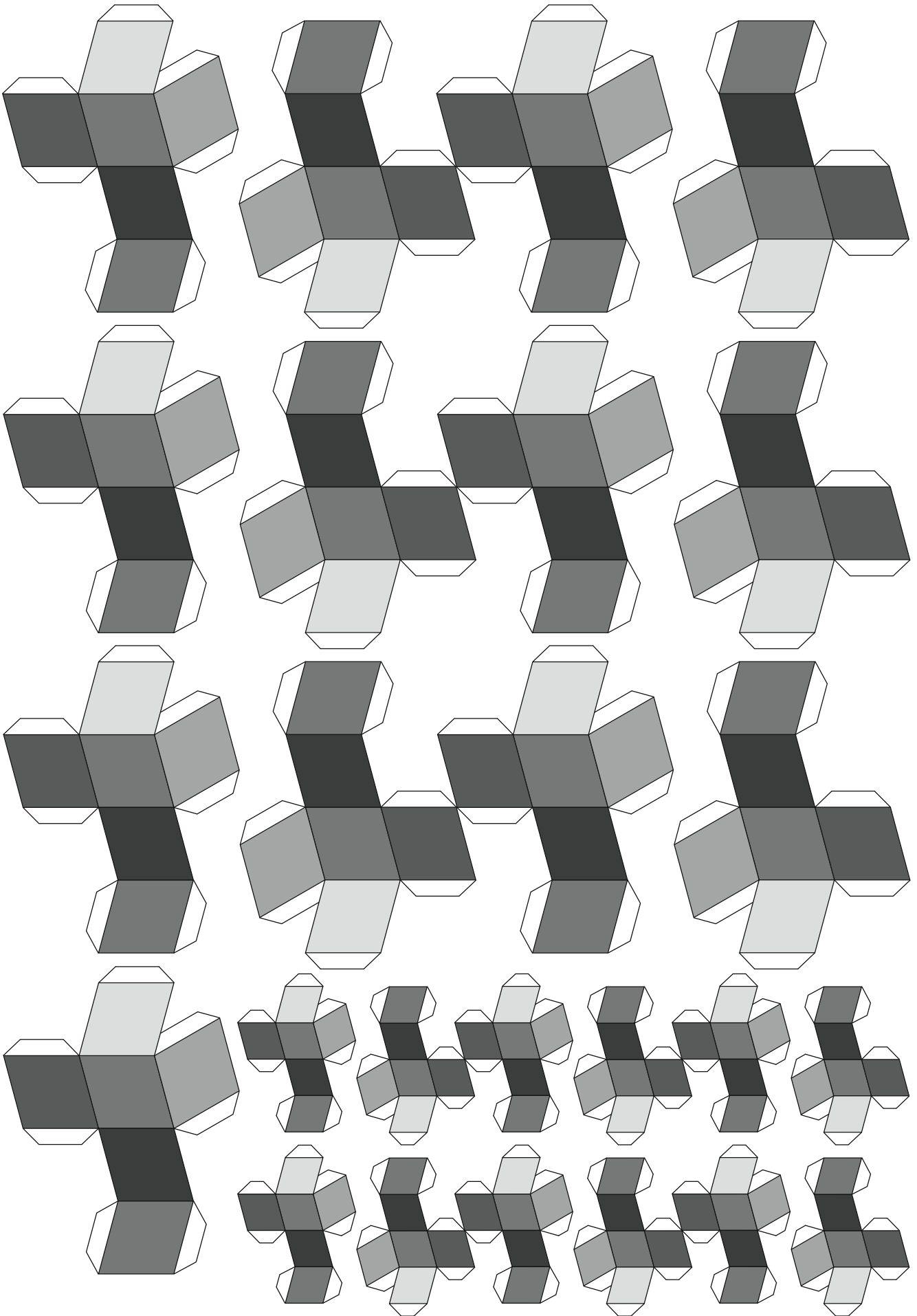
- - - - The shapes must be folded at these lines. Use a ruler and a ball point pen without ink to score along these lines. This gives you a precise folded edge. It is easiest to score before you cut the shapes.

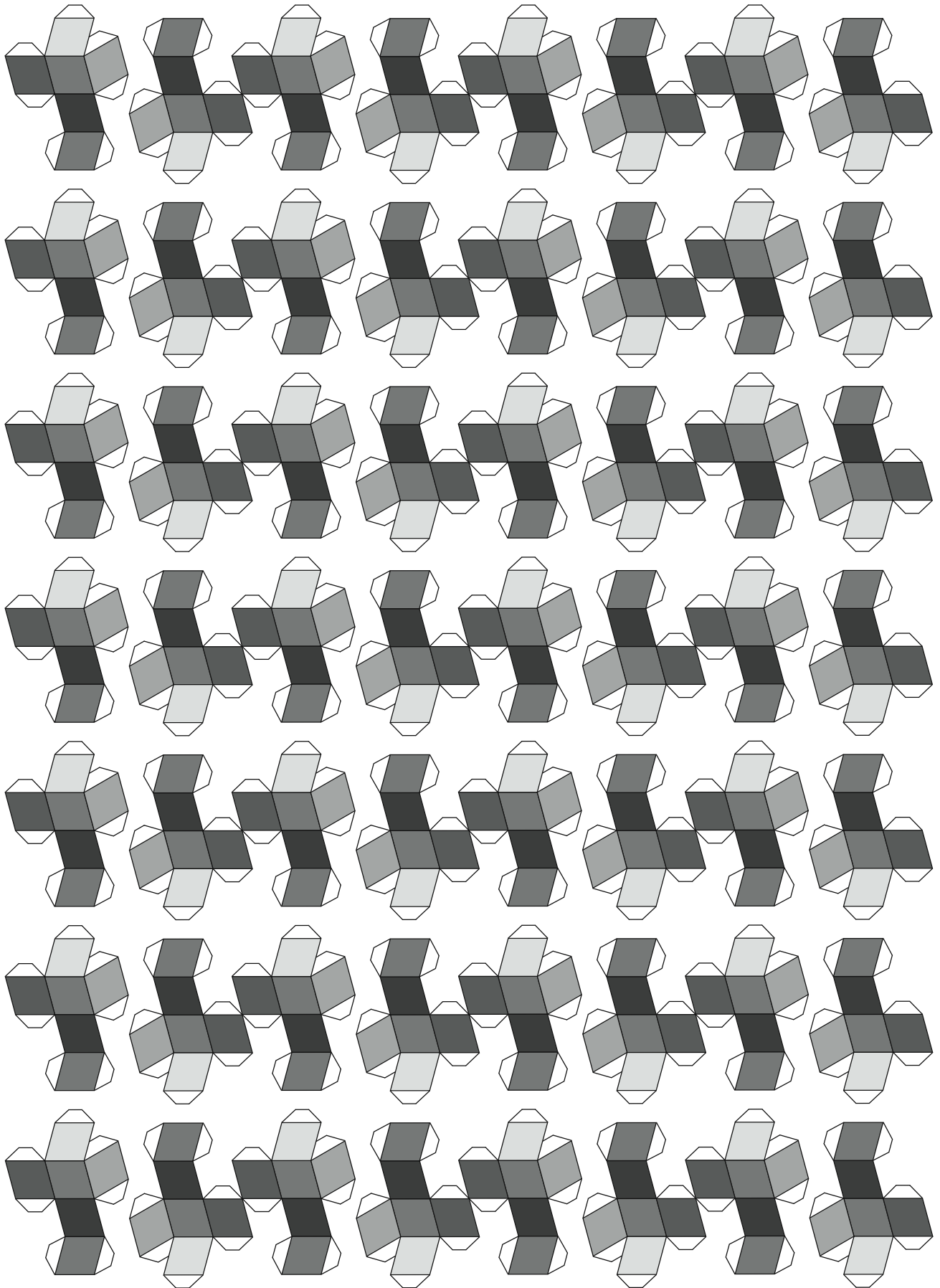


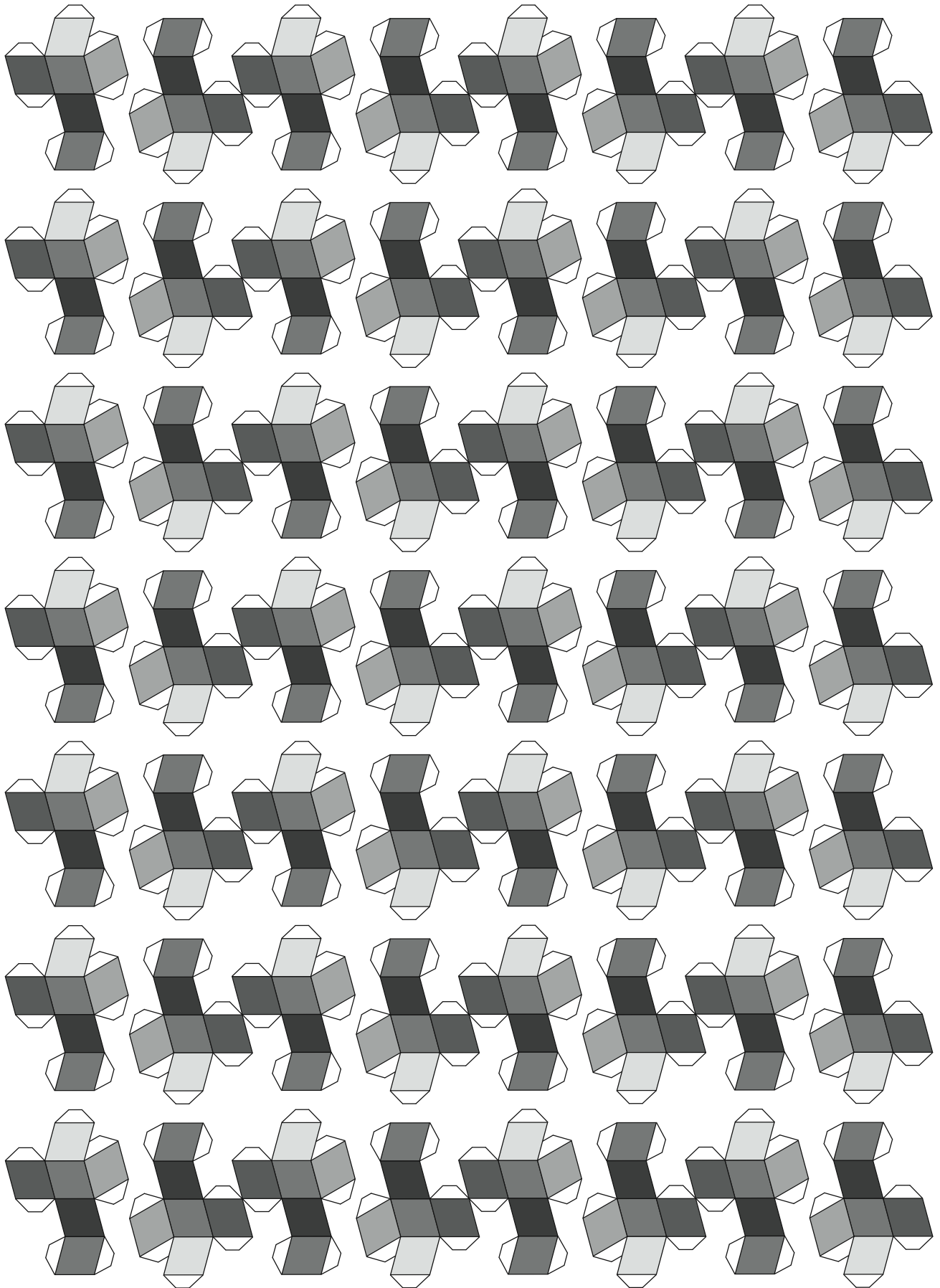
The finished "cubes" are then glued on to each other. Follow the rule of putting smaller "cube" on one size larger "cube" and place it in the corner of the larger side. Remember to keep the "cubes" with the same shaded sides facing the same direction with the light sides facing up and the dark facing down.







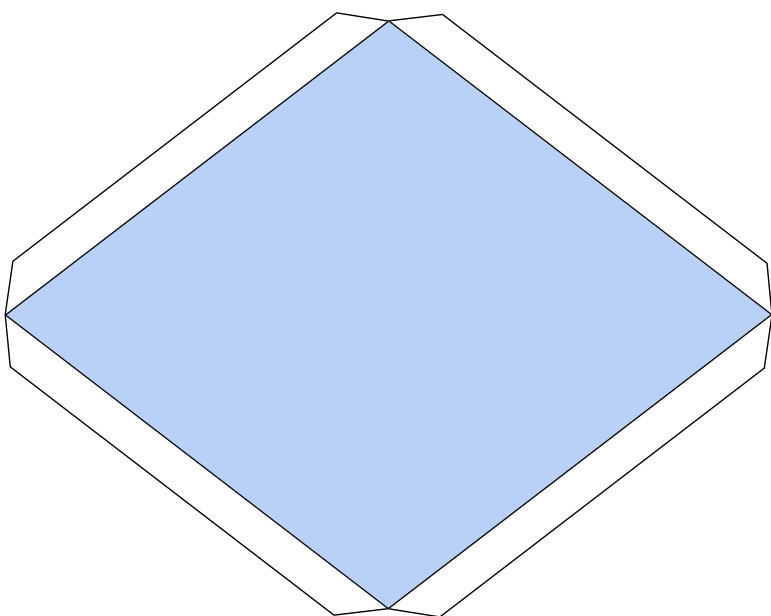
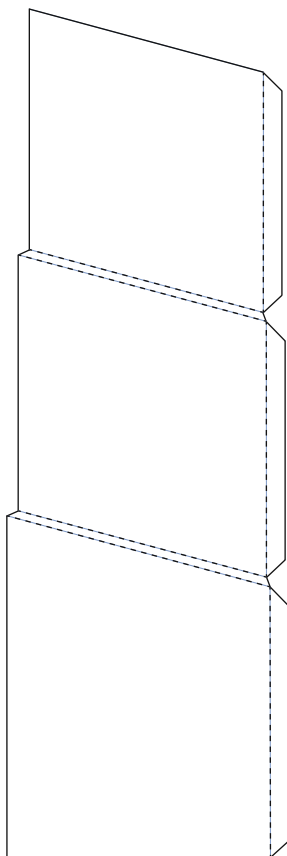
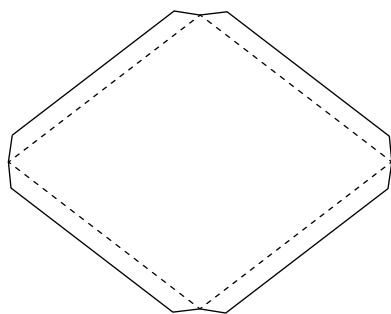




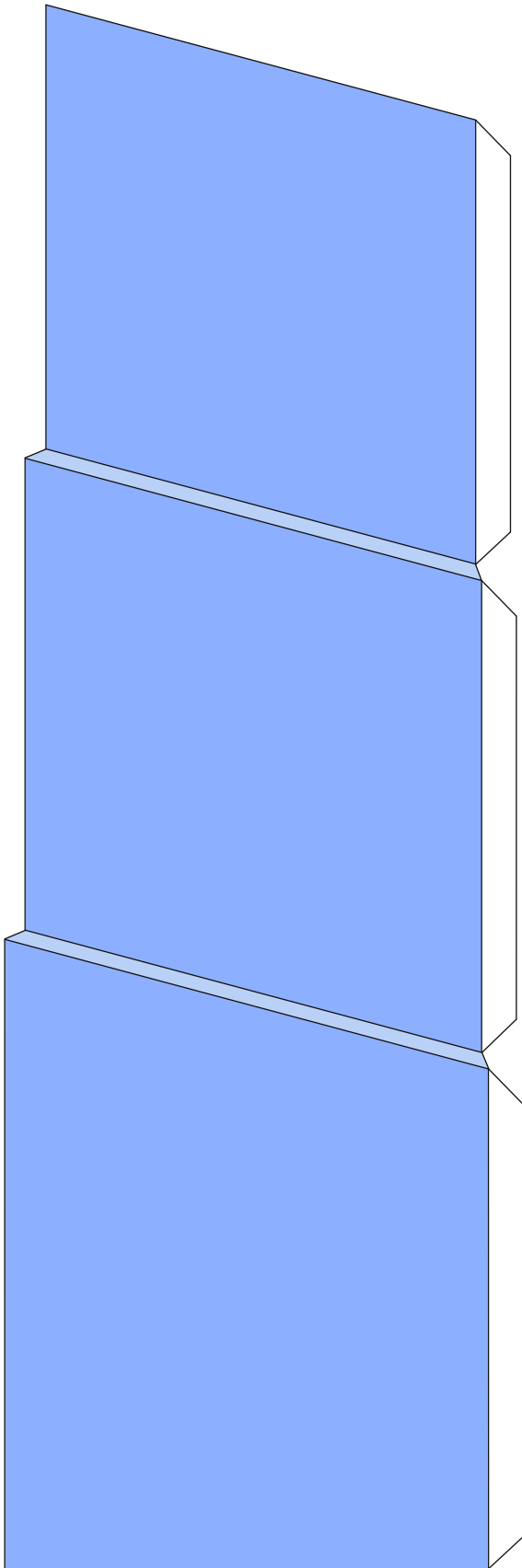
The sculpture's pedestal is assembled from five parts: four sides and a top which the sculpture rests on. Because of the slant the sculpture must be glued to the pedestal.

— Cut the shapes along these lines.

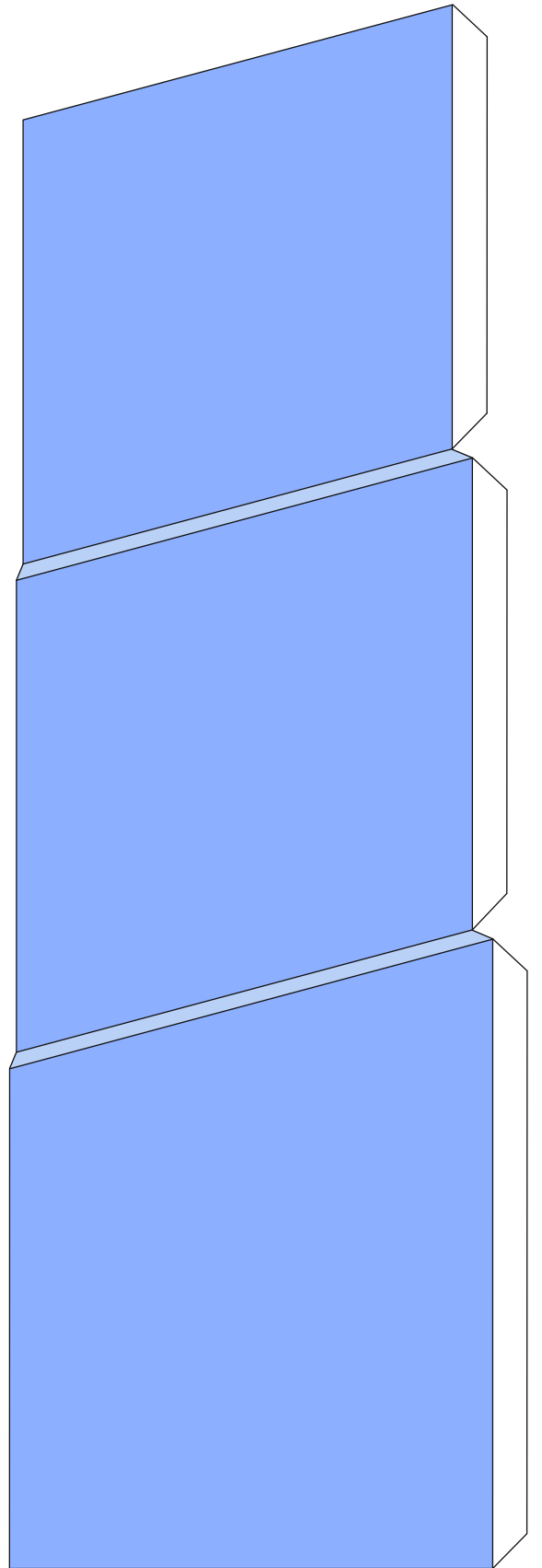
----- The shapes must be folded at these lines. Use a ruler and a ball point pen without ink to score along these lines. This gives you a precise folded edge. It is easiest to score before you cut the shapes.



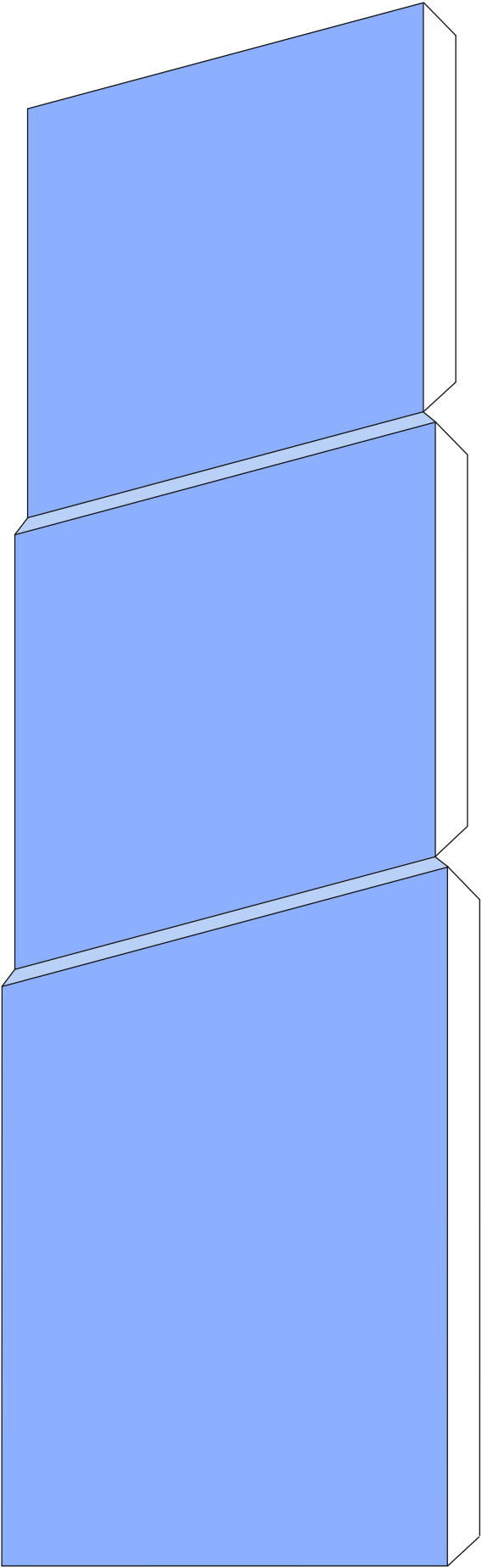
Top



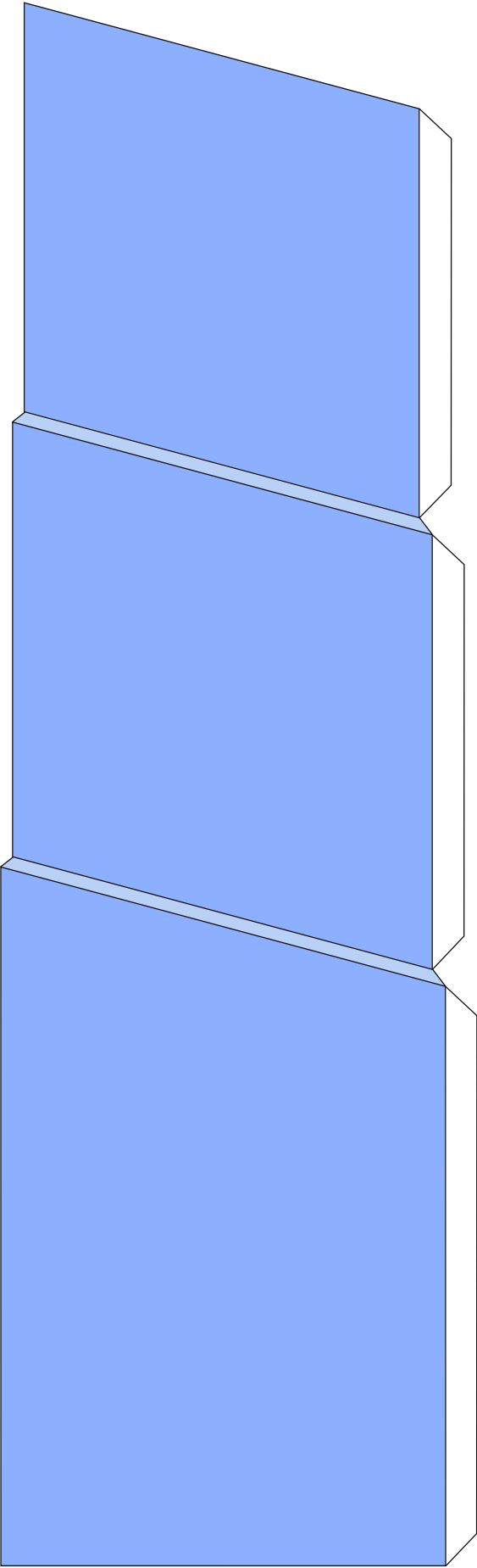
Front left



Front right



Back left



Back right